

quality standards

Components

Railings

Other components

* Internal fixtures such as wardrobe, kitchen cabinet, vanity top, mirror, bathtub, water closet, shower screen and basin

** External fixtures such signage, emergency lightings, railings, unit nos plate, lift fittings, letter box, lightings, etc

1) Joints & Gap

- Consistent joint width & neat joint
- No visible gap

2) Alignment & Evenness

- Level and in alignment

3) Material and Damages

- No stain marks
- No visible damage/defects
- Consistent in colour tone

4) Functionality

- Functional, secured and safe

5) Accessories Defects

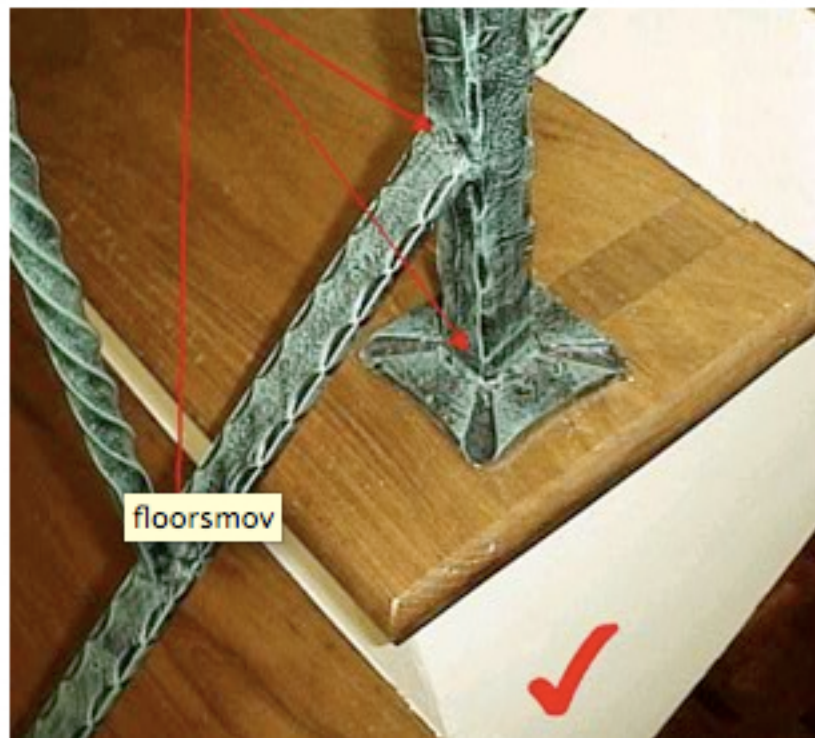
- No missing accessories
- No sign of corrosion
- No visible damages/defects

railings



Mortar droppings and other stains should not be observed

railings



Welding at joints must be grounded or flushed

railings



Verticality of balusters must not exceed 3mm per metre

railings



Neat joints

other components



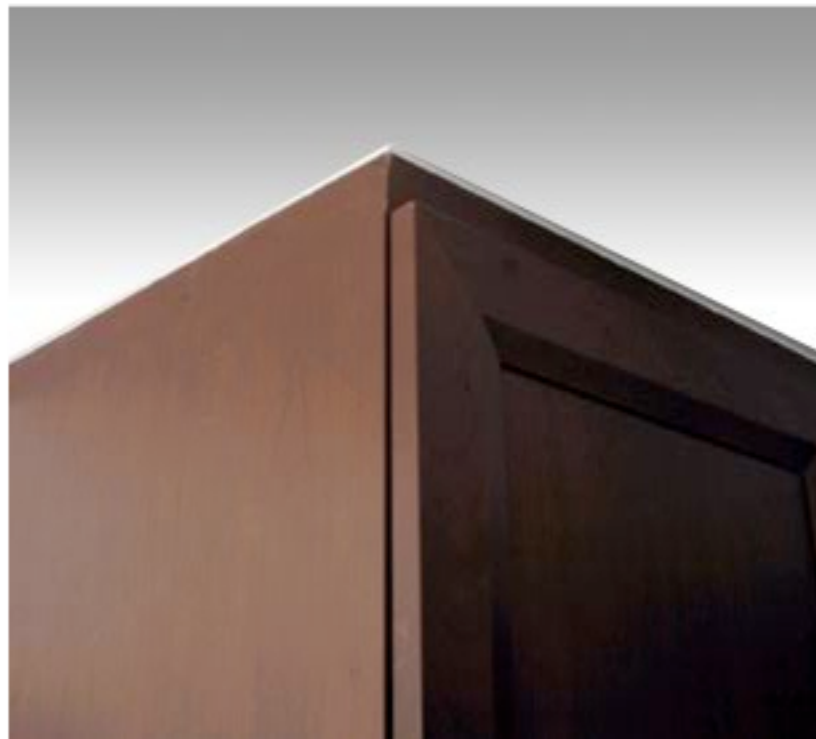
Pointing width must
be consistent and
neat

other components



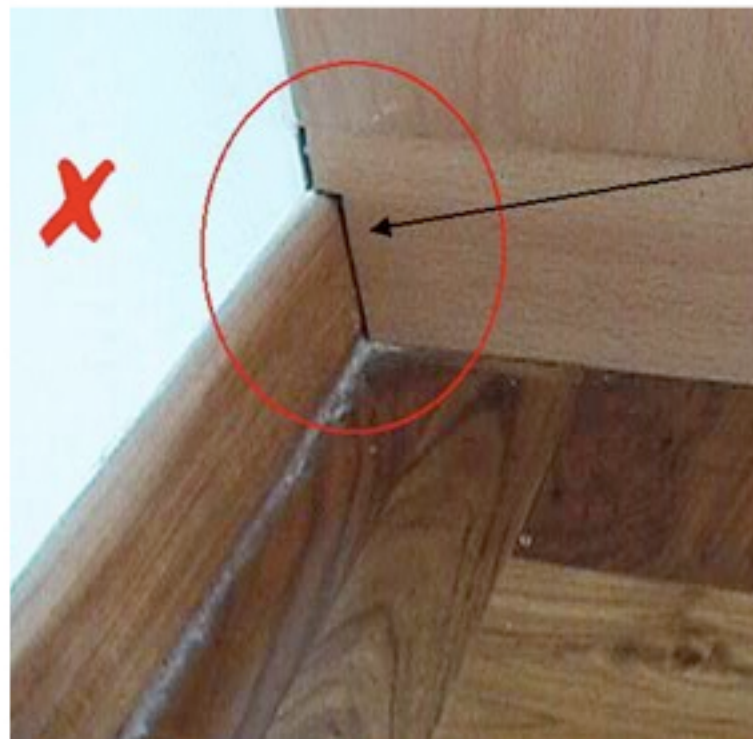
Functionality problem -
shower screen door unable to
close properly

other components



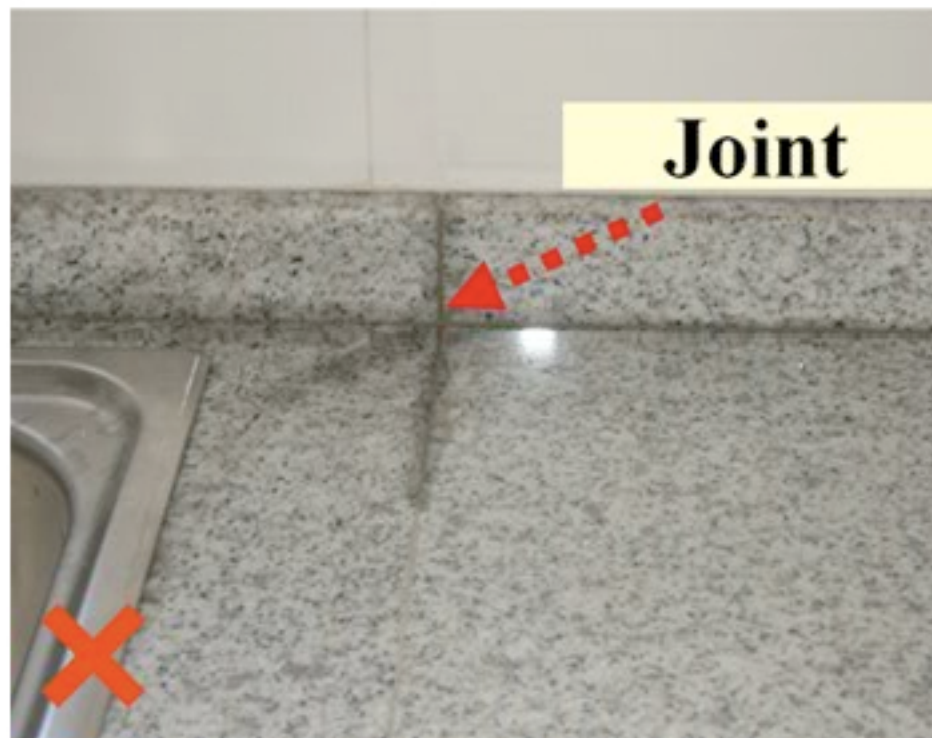
Consistent joints and neat pointing between wardrobe, ceiling and wall

other components



Missing filling on gap
between wardrobe and wall

other components

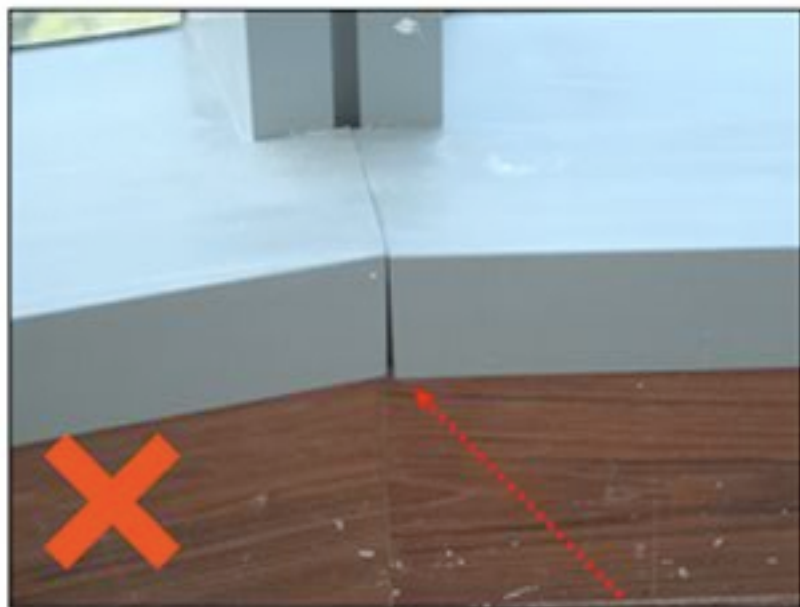


shower cubicle



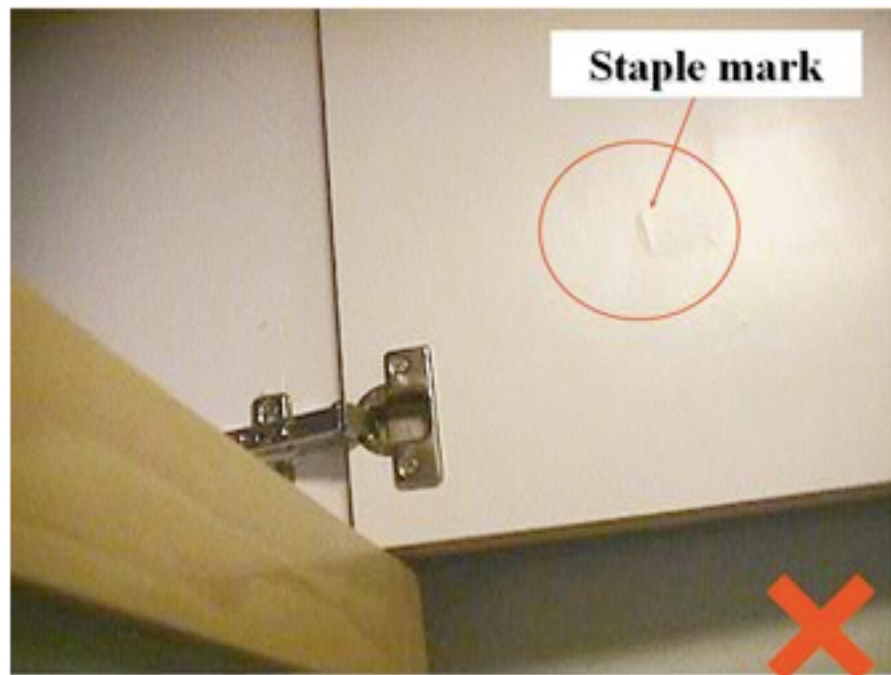
In consistent gap of tiles and glass door

other components

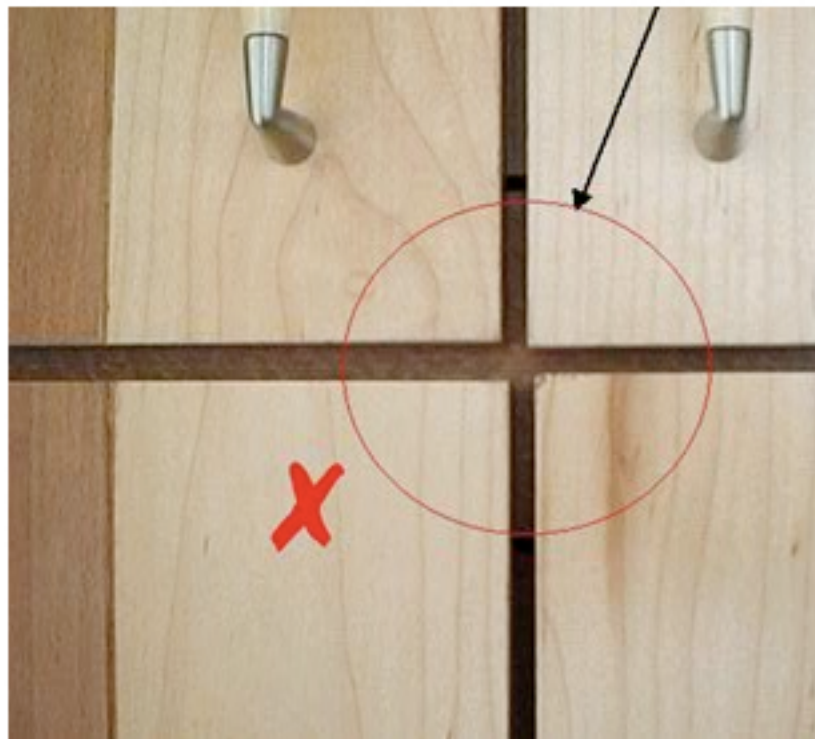


metal cladding joint

other components



other components



Inconsistent door gaps for wardrobe

other components



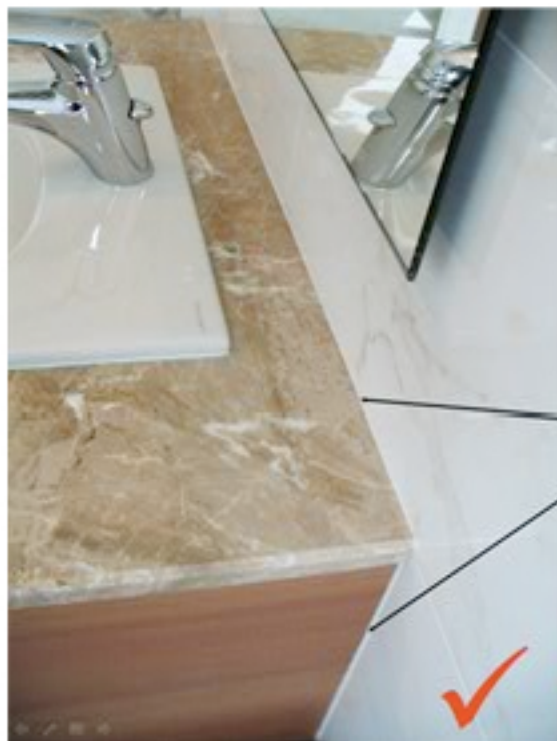
**Wardrobe
door not
aligned**

other components

**Consistent joint
width & neat**



other components



**Consistent & neat
joints**

other components



Good Joint between a wall and wardrobe

other components



Good Joint between a floor and wardrobe

other components

